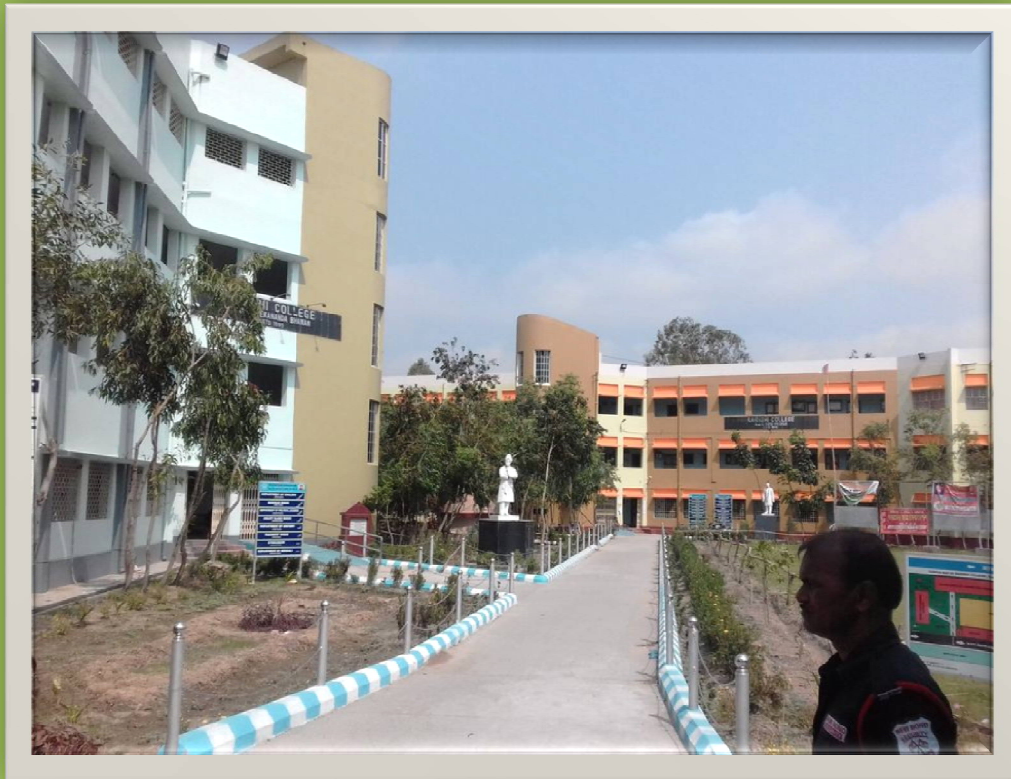


GREEN AUDIT REPORT OF RAIDIGHI COLLEGE

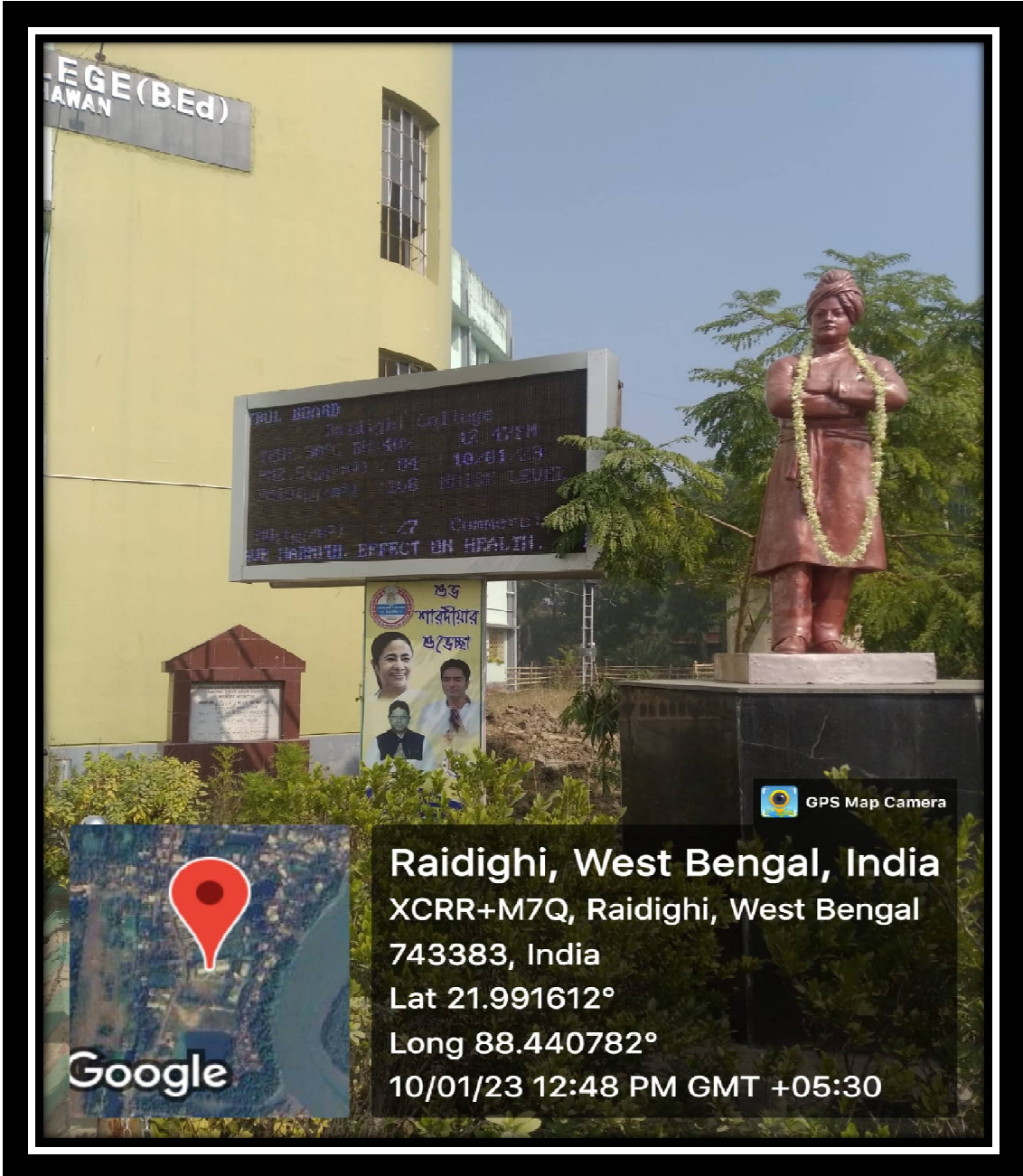


2021-2022

GREEN CLUB SUB-COMMITTEE & INTERNAL QUALITY ASSURANCE CELL (IQAC)

RAIDIGHI COLLEGE

P.O.-RAIDIGHI, SOUTH 24 PARGANAS – 743 383.

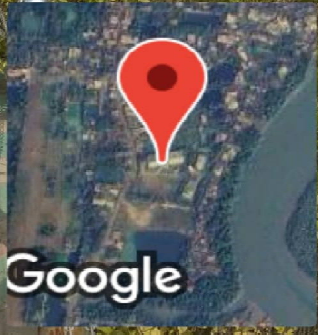


EGE (B.Ed)
TAWAN

COL. BOARD
Raidighi College
10-01/23 12:48 PM
10-01/23
27
THE HARMFUL EFFECT ON HEALTH.

শুভ
শারদীয়
অভিষেক
শুভেচ্ছা

GPS Map Camera



Google

Raidighi, West Bengal, India
XCRR+M7Q, Raidighi, West Bengal
743383, India
Lat 21.991612°
Long 88.440782°
10/01/23 12:48 PM GMT +05:30

CONTENT

CHAPTER NO.	TITLE	PAGE NUMBER
	Executive Summary	05-05
CHAPTER - 1	Introduction	06-14
1.1	Green Audit	
1.2	Why Green Audit	
1.3	Goals of Green Audit	
1.4	Objective of Green Audit	
1.5	About criteria 7 of NAAC	
1.6	Benefit of Green Audit on Educational Institute	
1.7	Introduction of Auditing Firm	
1.8	List of Instrument Energy Audit	
1.9	List of Laboratory Equipments for Environmental Monitoring	
1.10	List of Field Equipments in Environment Department	
1.11	General Steps involved in Green Audit	
CHAPTER - 2	Raidighi College	15-20
2.1	About the College	
2.2	College History	
2.3	Introduction	
2.4	Vission & Mission	
CHAPTER - 3	Green Audit Methodology	21-22
3.1	Utility of Green Audit	
3.2	Objectives of the study	
3.3	Methodology	
CHAPTER - 4	Land Use Analysis	23-24
4.1	General overview of the concept of land use	
4.2	Methodology adopted for land use mapping	
CHAPTER - 5	Water Quality Assessment	25-30
5.1	Water Quality Test Report	
CHAPTER - 6	Ambient Air Quality Assessment and Management	
6.1	Air Quality Test Report	

CHAPTER NO.	TITLE	PAGE NUMBER
CHAPTER - 7	Noise Monitoring	31-32
7.1	Ambient Noise Monitoring Status	
CHAPTER - 8	Rain Water Harvesting System	33-33
8.1	Rain Water Harvesting	
CHAPTER - 9	Electricity Consumption and Management	34-38
9.1	General Details	
9.2	Electrical Details	
9.3	Use of Alternate Energy	
CHAPTER - 10	Waste management	39-41
10.1	Solid Waste	
10.2	Liquid waste	
10.3	E-waste	
CHAPTER - 11	Biodiversity Status of the College Campus	42-69
11.1	Introduction	
11.2	Objective	
11.3	Method of Study	
11.4	Plant Diversity in the College	
11.5	Medicinal Plant in the College Campus	
11.6	Faunal diversity in the college campus	
11.7	Checklist of Ferns and Seasonal Flowers	
CHAPTER - 12	Green Initiative	70-71
12.1	Plantation Programme	
12.2	Green Computing Practice	
CHAPTER - 13	Consolidation of audit findings	72-74
13.1	Preparation of Action Plan	
13.2	Follow up Action and Plans	
13.3	Environmental Education	
CHAPTER - 14	Conclusion and Recommendation	75-78
14.1	Suggestions	
14.2	Recommendations	
ACKNOWLEDGEMENT		79-79
CERTIFICATE	ISO 9001:2015	80-80

ExEcutive Summary

Rapid urbanization and economic development at local, regional and global level has led to several environmental and ecological crises. On this background it becomes essential to adopt the system of the green campus for the institute which will lead for sustainable development. Raidighi College is deeply concerned and unconditionally believes that there is an urgent need to address these fundamental problems and reverse the trends. Being a premier institution of higher studies, the college has initiated 'The Green Campus' programme few years back that actively promote various projects for environment protection and sustainability.

Purpose of this audit is to ensure that the practices followed in the campus are in accordance with the green policy adopted by the institution, it works on several facets of Green Campus including water conservation, electricity conservation, tree plantation, waste management, paperless work, mapping of biodiversity etc. With this in mind, specific objectives of the audit is to evaluate adequacy of the management control framework of environment sustainability as well as the degree to which the departments are in compliance with the applicable regulations, policies and standards. It can make a tremendous impact on students' health and learning, college operational costs and the environment. The criteria methods and recommendations used in the audit were based on the identified risks.

Sonar Bharat Environment & Ecology Pvt. Ltd.
Parimal Sarkar
Director

CHAPTER - 1

INTRODUCTION

1.1 Green Audit

Environmental or Green Audit is a systematic, documented, periodic and objective review by regulated entities of facility operations and practices adopted to meet the environmental requirements (EPA, 2003). In other words, it is a management tool, comprising of systematic, documented, periodic and objective evaluation of how well environmental organization, management and equipment are performing with the aim of helping to safeguard the environment by facilitating management control of practices and assessing compliance with Institutional policies, which would include regulatory requirements and standards applicable.

Environmental auditing is essentially an environmental management tool for measuring the effects of certain activities on the environment against set criteria or standards. Depending on the types of standards and the focus of the audit, there are different types of environmental audit. Organizations of all kinds now recognize the importance of environmental matters and accept that their environmental performance will be scrutinized by a wide range of interested parties.

Considering the present environmental problems of pollution and excessive use of natural resources, Honorable Prime Minister, Shri. Narendra Modi has declared the Mission of Swachh Bharat Abhiyan. Also, University Grants Commission has mentioned the "Green Campus, Clean Campus" mission mandatory for all higher educational institutes. As environmental sustainability is becoming an increasingly important issue for the nation, the role of higher educational institutions in relation to environmental sustainability is more prevalent.

1.2 Why Green Audit

- To ensure that the performance of the institution with respect to environmental activities is in compliance with existing laws and regulations.
- To check the functionality and their operating success including water supply, energy related matters and other similar matters that are related to green operations in the campus
- To formulate or update the institution's environmental policy, if warranted.
- To measure the environmental impact of operational process related to green activities in the campus.
- To measure the performance of each green related operations and actions in the campus.
- To generate a data base of green activities for continuous monitoring to assess the success of each of them.
- To identify future potential liabilities.
- To align the institution's developmental and day to day activities with the stated vision, mission, strategies.
- To identify possible ways to reduce expenditure and running costs on equipments, appliances, etc. or try enhance revenue income.
- To improve process and materials efficiency, and in response to stakeholder requests for increased is closure.

1.3 Goals of Green Audit

College has conducted a green audit with specific goals as:

- Assess facility of different types of waste management.
- Increase environmental awareness throughout campus.
- Identification and documentation of green practices followed by university.
- Identify strengths and weaknesses in green practices.
- Conduct a survey to know the ground reality about green practices.
- Analyze and suggest solutions for problems identified from the survey.
- Identify and assess environmental risk.

- The long-term goal of the environmental audit program is to collect baseline data of environmental parameters and resolve environmental issues.

- To motivate staff for optimized sustainable use of available resources.

1.3 Objective of Green Audit

The general objective of green audit is to prepare a baseline report on biodiversity and other resources, measures to mitigate resource wastage and improve resource quality and sustainable practices. The specific objectives are:

- To prepare a checklist of flora and fauna diversity in and around the college campus.
- To suggest measures to improve biodiversity within the college campus.
- To monitor the energy consumption pattern of the college.
- To assess the quantity of water usage within the college campus.
- To suggest sustainable energy usage and water conservation practices.
- To find out various sources of organic and solid waste generation and mitigation possibilities.
- To inculcate values of sustainable development practices through green audit mechanism.

1.5 About Criteria 7 of NAAC

National Assessment and Accreditation Council (NAAC) is a self-governing organization that rated the institutions according to the scores assigned at the time of accreditation of the institution. Green Audit has become a mandatory procedure for educational institutes under Criterion VII of NAAC. The intention of the green audits is to upgrade the environmental condition inside and around the institution. It is performed by considering environmental parameters like water and wastewater accounting, energy conservation, waste management, air, noise monitoring, etc. for making the institution eco-friendlier.

Students are the major strength of any academic institution. Practicing green action in any educational institution will inculcate the good habit of caring for natural resources in students. Many environmental activities like plantation and nurturing saplings and trees, Cleanliness drives, no vehicle day, Rainwater harvesting, etc. will make the students good citizens of the country. Through Green Audit, higher educational institutions can ensure that they contribute towards the reduction of global warming through Carbon Footprint reduction measures.

1.6 Benefit of Green Audit to an Educational Institute

There are many advantages of green audit to an Educational Institute.

- It would help to protect the environment in and around the campus.
- Recognize the cost-saving methods through waste minimization and energy conservation.
- Empower the organization to frame a better environmental performance.
- It portrays a good image of the institution through its clean and green campus.
- More efficient resource management.
- To create a green campus.

- To enable waste management through reduction of waste generation, solid and waste.
- To create plastic-free campus and evolve health consciousness among the Stakeholder.
- Recognize the cost-saving methods through waste minimizing and managing.
- Authenticate conformity with the implemented laws.
- Empower the organizations to frame a better environmental performance.
- Enhance the alertness for environmental guidelines and duties.
- Impart environmental education through systematic environmental management approach and Improving environmental standards.
- Benchmarking for environmental protection initiatives.
- Financial savings through a reduction in resource use.
- Development of ownership, personal and social responsibility for the University and its environment.
- Developing an environmental ethic and value systems in youngsters.
- Green auditing should become a valuable tool in the management and monitoring of environmental and sustainable development programs of the University.
- Finally, it will help to build a positive impression through green initiatives for the upcoming NAAC visit.

1.7 Introduction of Auditing Firm

Name of Firm	M/s. Sonar Bharat Environment & Ecology (P) Ltd.
Address	35, C. R. Avenue, 3 rd floor, Kolkata - 700012
Contact Details	033-40031179/033-22113034

Details of team Member

Sr. No.	Name	Designation/ Technical	Technical Experience /Qualification
1	Shri Parimal Sarkar	Legal Expert	<ul style="list-style-type: none">➤ M.Sc. in Disaster Management➤ Post Graduate Diploma in Environmental Law from National Law School, Bangalore➤ Lead Auditor in ISO 14000 (Environmental Management)
2	Shri Subrata De Sarkar	General Manager	<ul style="list-style-type: none">➤ General Manager in Central Public Sector undertaking.➤ 12 years experience in Environmental Auditing➤ Lead Auditor in ISO 50001:2011
3	Shri Suman Chchattaraj	Environmental Specialist	<ul style="list-style-type: none">➤ M.Tech in Environmental Science➤ 20 years experience in Environmental Impact Studies and Auditing

Energy Audit Team

S N	Name	Designation/ Qualification	Experience
1	Shri Suvra Majumdar	<ul style="list-style-type: none">➤ Post Graduate Diploma in Energy Management (MBA)➤ B.Tech (Electrical Engineering)	<ul style="list-style-type: none">➤ 15 years experience of Energy audit
2	Shri Gautam Ghosh	<ul style="list-style-type: none">➤ Diploma in Mechanical & Electrical Engineering from Calcutta Technical School	<ul style="list-style-type: none">➤ 27 Years experience of working in electrical engineering department in different industries.➤ 12 years experience in independent electrical auditing

1.8 List of Instruments

Following are the instrument used at the time of the Energy Audit.

Sr.	Instrument	Make/Sr.No.
1	Digital LUX Meter	HTC/2222600
2	Digital Micro OHM Meter	Innova/I-259
3	Digital Multi Meter	Kusam Meco/162180630
4	Digital Clampmeter	Waco/1910149152
5	Meger	Waco/307421
6	Load analyser	Waco/2954563

1.9 List of Laboratory Instruments for Environmental Monitoring

Sl. No.	Name of Equipment	Make	Model
1	GAS CHROMATOGRAPH WITH FID, TSD.	VARIAN	CP3800
2	GAS CHROMATOGRAPH MASS SPECTROMETER WITH ECD	VARIAN	CP 3800 SATURN 2200
3	GAS CHROMA TOGRAPH WITH FID for Air	DANI	Master GC
4	ION CHROMATOGRAPH	Thermo Fisher Scientific	DIONEXICS 1100
5	H.P.L.C.	VARIAN	SERIES 200
6	FTIR	Thermo Fisher Scientific	Nicolet IS10
7	ATOMIC ABSORPTION SPECTRROPHOTOMETER	VARIAN	AA 2406TA 120
8	MERCURY ANALYSER	EC	MAS 5840
9	FLAME PHOTOMETER	LOWERENCE & MAYO	381
10	SPECTRO PHOTOMETER	VARIAN	CARY 50
11	BOD INCUBATOR	MULTISPAN	DIGITAL
12	ELECTRONIC MICRO BALANCE	Citizen	CMSF

1.10 List of Field Equipment Department

Sl. No.	Name of Equipment	Make	Model
1	Field Dust Sampler	Envirotech/Lata Envirotech	APM – 550, PM 2.5 & 10
2	Respirable Dust Sampler	Envirotech/Lata Envirotech	APM-460BL
3	Stack Kit Sampler	Envirotech/Lata Envirotech	APM-620, PM-602
4	Sound Level Meter (AUTOMEDTIC)	Envirotech	SLM-101
5	Sound Level Meter	Lutron	SLM-4001
6	Local Air Quality Sampler	Vayubodhan	APM-414
7	Auto Metric Whather Monitor	Spectrum Technology	WM-272
8	Depth Sampler	NA	NA

1.11 General steps involved in Green Audit

- a) Systematic and exhaustive data collection.
- b) Evidence based documentation of activities.
- c) Regular monitoring.
- d) Provide standards and methods for improvement by establishing cost effective green action plan.

CHAPTER – 2

RAIDIGHI COLLEGE

2.1 About the College

Raidighi College is a NAAC-accredited co-education college affiliated with the University of Calcutta situated in South 24 Parganas, Raidighi beside the Mani River. This institute started its journey on 16 th May 1995 with the primary motto to make higher education available to the weaker section of society and uplift the rural area through its constant community services. The Raidighi Park, the UNESCO heritage site, Jatar Deul and the largest mangrove in the World, Sundarbans are not far away from this educational institute. The campus has two buildings, a canteen, Girl's Hostel and a field with an adjacent huge pond. There is a medicinal plant garden and a few others varieties of plants, trees and saplings. From time-to-time different natural creatures visit the campus like snakes, birds, bees, butterflies, lizards, chameleons etc. As time is passing an increasing number of trees from surrounding areas are vanishing, and the number of vehicles is increasing which adds to the increased pollution level? Thus, if this trend keeps on increasing then this locality as well as the College has to face the wrath of many more natural calamities like the previous ones for example Fani, Bulbul etc. which leads to huge loss of man and material damage destroying the hard work and advancements made in no time. During such times of difficulty, this College acts as the sole shelter for the local people so protecting the environment in and around the College will not only benefit the stakeholders but also the rural community people.

2.2 College History

On May 16th, 1995 at the initiative of some sincere and selfless local people and under the guidance of a number of enthusiasts, Raidighi College started functioning. Time has flown fast and Raidighi College is celebrating its silver jubilee year.

Raidighi College is located in an area which is socio-economically backward. Natural calamities are part and parcel of the people of this locality, students who come to pursue their higher studies are very poor. They sometimes fail to pay the minimum fees of the college. For the development of infrastructure we always look forward the grants allocated by the different Government agencies. College is in urgently in need to develop some infrastructure which are mostly for the welfare of our students.

It needs to be mentioned here that with the help of grants from U.G.C. and Sunderban Development Board construction we have started our girls' hostel from 25 th March, 2018. In the near future, we also wish to construct a similar hostel for boys. These hostels, we are confident, will immediately benefit those students who come to the college from far off areas and are therefore, inconvenienced by the hazards of having to commute long distances to and from the college. Among our future plans is also the construction of an auditorium with adequate seating capacity and all modern facilities. We also give UGC - sponsored remedial coaching classes, a different competitive examinations for entry into services for weaker section of ST, SC and OBC students. We also intend to set up a modern computer training centre in the college itself, which will enable not only the students of the college but the students and eager people of the entire Sundarbans area to receive training in computers and thereby discover new and fresh means to earn their livelihood. We have started a Study Centre of Netaji Subhas Open University, which will enable the students of sundarbans to receive degrees in various post-graduate courses.

The Institute consider social awareness among the students is one of the important aspects to make them a good citizen. NSS's two units in the college have been paving the way in this direction. Volunteers of the NSS units have been doing a lot of works for the upliftment of social awareness among the people of this lineage part of Sundarbans. Health and nutrition oriented programmes and other STDS have been organised. Blood Donation Camp is one of its regular activities. Repairing of roads in the local areas, cleaning of hospital premises, illiteracy eradication programme etc. have been made mandatory for our volunteers.

Our institute believes in overall development of our students-both mental and physical growth. We encourage our students to participate in different sports events both in university level and society level. Our football and kabadi teams (both Boys and girls) are performing excellently and consistently. Our players were selected to play at national level. Students are enthusiastic to participate in other games and sports also. But inadequacy of fund and infrastructure they are not getting optimum opportunity to show their talent

Our students also participate in different cultural competitions. Students of Political Science Department are participating in Youth Parliament and quiz contest every year. They are to be appreciated in this regard. Even living in this remote part of the state, they are capable to win prizes for the college. In near future we are planning to have audio visual classes to train them.

Students of this institution are of first generation learner. They possess little knowledge about co-curricular and extra-curricular activities. Still we have been trying hard to make them aware of other activities of the department. We have been providing them opportunity to write down their own thoughts and imaginations. Wall magazines are the perfect. Example of their creative writing. Already Geography Department has been able to publish 5th editions of its departmental journal. English Department is on the track to publish its 4th edition of its journal 'Critique' within a very short period. Other departments are thinking on the same way. A few editions of departmental wall magazine have already been published. Departmental seminars are also very encouraging in our college. Students are getting ready how to deliver lecture. Departmental get-together and educational tour are normal aspect.

Though we do not have experienced any inter-departmental competitions, but it has been found that students use to participate in different events departmentally. Quiz contest and debate 'competitions are the finest example of such activities. Our students use to organise 'Teachers' Day' programme every year both centrally and departmentally. The college also organizes Annual competition in music, recitation, extempore speech and debate.

The Learning parameter is so high that new students are learning very quickly from our elder students. We have strong faith on our students that in the near future our students will definitely develop themselves to that extent that we will be able to produce them at any arena.

2.3 Introduction

Environmental or Green Audit is a systematic, documented, periodic and objective review by regulated entities of facility operations and practices adopted to meet the environmental requirements (EPA, 2003). In other words, it is a management tool, comprising of systematic, documented, periodic and objective evaluation of how well environmental organization, management and equipment are performing with the aim of helping to safeguard the environment by facilitating management control of practices and assessing compliance with Institutional policies, which would include regulatory requirements and standards applicable.

Environmental auditing is essentially an environmental management tool for measuring the effects of certain activities on the environment against set criteria or standards. Depending on the types of standards and the focus of the audit, there are different types of environmental audit. Organizations of all kinds now recognize the importance of environmental matters and accept that their environmental performance will be scrutinized by a wide range of interested parties.

Location of the College

The College is located at nearest Raidighi Bus Stand, address is P.O. & P.S. : Raidighi, Dist. South 24 parganas, PIN – 743383.

Communication and Transportation

This college is well connected from with different parts of South 24 parganas district by bus and local trains. Lot of bus services from Kolkata, is available here. The nearest railway station is Mathurapur Road, near about 20 km from Raidighi. The nearest international and domestic airport is Netaji Subhas Chandra Bose International Airport of Kolkata.

2.4 Vission & Mission:

Vision of the College:

The vision of the College is to carve a niche for itself as a premier institution offering quality education to the poverty-stricken, under-developed community of rural marshlands of Sundarban.

The college endeavors to strengthen character, broaden mind, dispel superstition, impart moral values and consequently develop generations of worthy and responsible human beings who will build our future society. We want our students to contribute constructively towards nation-building by upholding the values of secularism, national integration and social commitment. We have a vision that the students coming out of our campus should be intellectually enlightened, emotionally sound, physically strong and practically efficient. We envision them to champion the cause of justice, truth and peace and be always open to further growth to attain the Absolute.

The challenges are infinite. Majority of the population belongs to socially and financially underprivileged category. A significant section belongs to impoverished minority groups. Their daily struggle to make both ends meet often becomes a hindrance to the process of learning. The rural position of the college, poor communication and the perpetually under developed locality are also key concerns. The area is threatened by cyclones and floods every monsoon and suffers from lack of basic facilities, e.g., inadequate power supply (which makes it extremely difficult to advance technologically). The nearest railway station is 24 km away and many students are dependent on irregular and infrequent ferry services across the nearby Moni river to reach the college. The proximity of the border area also has its disadvantages. Bright students from local families often cannot cope with these unending handicaps and prefer to migrate away from the locality for higher education. As a result, the general quality of input students in the college is unfortunately not very high. This renders the journey towards academic excellence extremely challenging. With better communication, sufficient infrastructure and more modern learning resources at its disposal, the college would have attracted more quality students. Nevertheless, Raidighi College is marching ahead with its sole objective of providing quality education to its rural, needy, academically backward students irrespective of their caste, creed, religion, gender and economic status.

Mission of the College:

Raidighi College was established with a single mission ~ to cater higher education to the poverty-stricken, under-developed community of this region and to develop the students into self-sufficient and responsible citizens through comprehensive education based on carefully prepared and well designed curriculum. Our mission is to impart quality education and exposure to the students and equip them to cope with the latest requirements, through innovative techniques and practices. We are confident that proper education is the best resort to uplift the youth in the rural and backward areas, and we are committed to facilitate meaningful education for our students, coming from far-away islands of the Sunderbans.

CHAPTER - 3

Green audit Methodology

3.1 Utility of Green Auditing

Green audit is used to improve existing anthropogenic activities, with the object to reduce the adverse effects of these activities upon environment. An environmental auditor will study an organization's efforts to conserve the environment in a systematic and documented manner and will produce an environmental audit report.

3.2 Objectives of the Study

The basic objective of green audit is to promote environment management and conservation in the college campus. Purpose of the audit is to identify, quantify, describe and prioritize the framework of environmental sustainability in compliance with the applicable regulations, policies and standards. Major objectives of carrying out green audit are:

- To introduce an awareness among the students regarding real concerns of environment and its sustainability.
- To secure the environment and cut down the threats posed to human health by analyzing the pattern and extent of resource use on the campus.
- To establish a baseline data to assess future sustainability by avoiding the interruptions in environment that are more difficult to handle and their corrections requires high cost.
- To bring out a present status report on environmental compliance.

3.3 Methodology

In order to perform green audit, methodology included different techniques such as physical inspection of the campuses, observation and review of the documentation, interviewing key persons and data analysis, measurement of the present status of environment management in the campuses:

- Water quality assessment, consumption and management
- Air quality assessment and management
- Electricity consumption and management
- Sound pollution monitoring
- Waste management
- Bio diversity status of the campus
- Land use and land coverage
- Rain water Harvesting
- Use of alternate energy sources.

CHAPTER - 4

LAND USE ANALYSIS, RAIDIGHI COLLEGE, WEST BENGAL

4.1 General overview of the concept of landuse:

Land use refers to man's activities and the various uses which are carried on and derived from land. Viewing the earth from space, it is now very crucial in man's activities on natural resource. In situations of rapid changes in land use, observations of the Earth from space give the information of human activities and utilization of the landscape.

4.2 Methodology adopted for land use mapping

Three types of data that are GPS points, field survey data and Google earth data for Geo-referencing have been used in this study. Land use map of the study area have been prepared using field survey

CLASSIFICATION SCHEME FOR LAND USE ANALYSIS OF BUILT UP AREA

Level-I	Level-II
1. Built- up land area	1.1 Dense 1.2 Moderate 1.3 Sparse

Therefore, attempt has been made in this study to map land use for Raidighi College with a view to detect the land consumption in the built-up land area.

LAND USE DATA OF COLLEGE OF RAIDIGHI COLLEGE

CATEGORIES OF LAND USE	AREA IN SQ METRES
OPEN SPACE AND PLANTATION	6969
Ground Coverage	9219
TOTAL AREA	16188

Ground coverage of 56.95% (i.e 9219 sq metres) consists of the buildings.

FINDINGS:

Raidighi College, which was established in the year 1924, has an eco-friendly environment. It has a long legacy of healthy environmental practices including periodic plantation, their preservation and maintenance. Its land use is such that about 43.05% of the total area is occupied by open land and plantation that generates a better and sustainable campus environment.

CHAPTER – 5

WATER QUALITY ASSESSMENT CONSUMPTION & MANAGEMENT

Water quality analysis was conducted by Qualissure Laboratory Services

5.1 Water Quality Analysis Test Report

DOC NO : QLS/SAMP/08-D/00

Name & Address of the Customer : M/s. Raidighi College Raidighi, South 24 Parganas.	Report No.	: QLS/W/22-23/C/860
	Date	: 24.01.2023
	Sample No.	: QLS/W/22-23/C/860
	Sample Description	: Drinking Water
	Sample Mark	: Aqua guard
	Date of Performance	: 12.01.2023-19.01.2023
	Sample Drawn On	: 10.01.2023

Analysis Result

(A) Microbiological Analysis

Sl. No.	Characteristic	Limit as per Drinking Water Standard : IS:10500, 2012 Amd. 2	Test Method	Result
1.	Total Coliform Bacteria/100ml	Not Detectable	IS 15185-2016	Not Detected
2.	E.coli /100ml	Not Detectable	IS 15185: 2016	Not Detected

(B) Chemical Analysis

Sl. No.	Test Parameter	Test Method	As per Drinking Water Standard : IS:10500, 2012 Amd. 1 & 2		Result
			Acceptable Limit	Permissible Limit	
1.	pH Value at 25°C	IS 3025 (Part 11)- 1984 RA: 2012	6.5-8.5	No Relaxation	8.04
2.	Turbidity in NTU	IS 3025 (Part 10)- 1984 RA: 2012	1	5	<1.0
3.	Total Dissolved Solids (TDS) in mg/l	IS 3025(Part 16)- 1984 RA: 2012	500	2000	234
4.	Calcium(as Ca) in mg/l	IS 3025 (Part 40): 1991(RA 2014)	75	200	32.9
5.	Chloride(as Cl) in mg/l	IS 3025 (Part 32): 1988 (RA 2014)	250	1000	46.6
6.	Iron (as Fe) in mg/l	IS 3025(Part 53)-1988 RA: 2014	1.0	No Relaxation	<0.05
7.	Magnesium(as Mg) in mg/l	IS 3025 (Part 46)-1994 RA: 2014	30	100	14.1
8.	Nitrate (as NO ₃) in mg/l	IS 3025 (Part 34)-1986 RA: 2014	45	No Relaxation	<0.5
9.	Free Residual Chlorine in mg/l	IS 3025 (Part 26): 1986(RA 2014)	0.2	1.0	<0.1
10.	Sulphate (as SO ₄) in mg/l	IS 3025 (Part 24)-1986, RA: 2014	200	400	30.2
11.	Alkalinity (as CaCO ₃) in mg/l	IS 3025 (Part 23)- 1986, RA: 2014	200	600	180.6
12.	Total Arsenic(as As) in mg/l	IS 3025 (Part 37):1988,RA 2014	0.01	No Relaxation	<0.01
13.	Total Hardness (as CaCO ₃) in mg/l	IS 3025 (Part 21)-1983, RA: 2014	200	600	141.1

for Qualissure Laboratory Services
Reviewed & Authorized By



(Signature)

(Benimadhab Gorai)
Authorized Signatory



21°59'29", 88°26'28", -51.8m, 353°
10/01/2023 01:52:39 pm

CHAPTER – 6

AMBIENT AIR QUALITY AssEssMENT ANd MANAqEMENT

6.1 Air Quality Test Report

DOC NO : QLS/SAMP/08-A/00

TEST REPORT

Name & Address Of the Customer : M/s. Raidighi College Raidighi, South 24 Parganas.	Report No.	: QLS/A/22-23/C/1417
	Date	: 24.01.2023
	Sample No.	: QLS/A/22-23/1417
	Sample Description	: Ambient Air
	Sample Mark	: Near Main Gate
	Ref. No. & Date	: SBEEPL/2022-2023/01, Dated: 05.01.2023

Analysis Result

Location: Near Main Gate		Date of sampling : 10.01.-11.01.2023		
Sampling Done by: P. Mandal		Sampling done as per : CPCB Guidelines (Volume-1)		
Environmental Condition: Clear & Sunny		Average Temperature : 20°C		
Barometric Pressure : 754 mm of Hg		Average Humidity : 51%		
Sl. No.	Pollutants	Result	Limit as per CPCB	Method of Test Reference
1	Particulate matter (<10µm) in µg/m ³	83	100	IS: 5182 (Part-23), RA-2017
2	Particulate matter (<2.5µm) in µg/m ³	46	60	USEPA CFR-40,Part-50, Appendix-L
3	Sulphur dioxide (SO ₂) in µg/m ³	7.8	80	IS: 5182 (Part-2)-2001, RA-2017
4	Nitrogen dioxide (NO ₂) in µg/m ³	34.2	80	IS: 5182 (Part- 6)-2006, RA-2017
5	Carbon Monoxide (CO) in µg/m ³	858	2000	IS: 5182 (Part-10):1999,RA-2014
NOTE: Limit as per CPCB notification, New Delhi, 18 th November 2009, for Ambient air quality.				

for Qualissure Laboratory Services
Reviewed & Authorized By




(Benimadhab Gorai)
Authorized Signatory



TEST REPORT

DOC NO : QLS/SAMP/08-A/00

Name & Address of the Customer : M/s. Raidighi College Raidighi, South 24 Parganas.	Report No.	: QLS/A/22-23/C/1418
	Date	: 24.01.2023
	Sample No.	: QLS/A/22-23/1418
	Sample Description	: Ambient Air
	Sample Mark	: College Campus
	Ref. No. & Date	: SBEEPL/2022-2023/01, Dated: 05.01.2023

Analysis Result

Location: College Campus		Date of sampling : 10.01.2023-11.01.2023		
Sampling Done by: P.Mandal		Sampling done as per : CPCB Guidelines (Volume-1)		
Environmental Condition: Clear & Sunny		Average Temperature : 20°C		
Barometric Pressure : 754 mm of Hg		Average Humidity : 51%		
Sl. No.	Pollutants	Result	Limit as per CPCB	Method of Test Reference
1	Particulate matter (<10µm) in µg/m ³	76	100	IS: 5182 (Part-23), RA-2017
2	Particulate matter (<2.5µm) in µg/m ³	40	60	USEPA CFR-40,Part-50, Appendix-L
3	Sulphur dioxide (SO ₂) in µg/m ³	7.3	80	IS: 5182 (Part-2)-2001, RA-2017
4	Nitrogen dioxide (NO ₂) in µg/m ³	32.8	80	IS: 5182 (Part- 6)-2006, RA-2017
5	Carbon Monoxide (CO) in µg/m ³	812	2000	IS: 5182 (Part-10):1999,RA-2014
NOTE: Limit as per CPCB notification, New Delhi, 18 th November 2009, for Ambient air quality.				

*for Qualissure Laboratory Services
Reviewed & Authorized By*



(Handwritten signature)

**(Benimadhab Gorai)
Authorized Signatory**



CHAPTER – 7

NOISE MONITORING

7.1 Ambient Noise Monitoring Status:

DOC NO : QLS/SAMP/08-C/00

TEST REPORT

Name & Address Of the Customer : M/s. Raidighi College Raidighi, South 24 Parganas.	Report No.	: QLS/A/22-23/C/1419
	Date	: 24.01.2023
	Sample No.	: QLS/A/22-23/C/1419
	Sample Description	: Ambient Noise
	Report No.	: QLS/A/22-23/C/468
	Ref. No. & Date	: SBEEPL/2022-2023/01, Dated: 05.01.2023

Monitoring Result of Noise

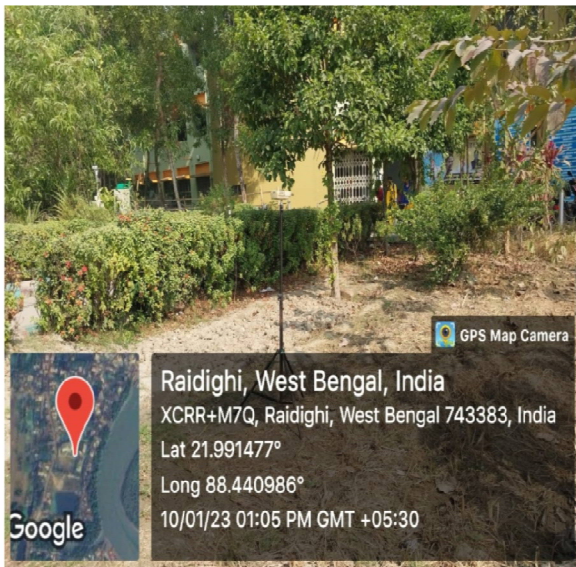
Sampling Done By: P.Mandal				
Sampling Guideline : As per IS: 9876: 1981 (RA-2001)				
Sample No	Date of Monitoring	Location	Leq dB (A) Day Time	Leq dB (A)Night Time
1419	10.01.2023-11.01.2023	College Campus	54.7	44.5

Code/ Category	Leq dB(A)Day Time	Leq dB(A) Night Time	<i>NOTE:</i> Day Time : 06.00 Hr. – 22.00 Hr. Night Time : 22.00 Hr. – 06.00 Hr.
A/Industrial	75	70	
B/Commercial	65	55	
C/Residential	55	45	
D/Ecological Sensitive	50	40	

for Qualissure Laboratory Services
Reviewed & Authorized By




(Benimadhab Gorai)
Authorized Signatory



CHAPTER - 8

Rain water HaRvesting system

A vital environmental concern has been addressed recently by developing Rain Water Harvesting system. Arrangements have been made for collection of rain water from the rooftop, roads and paved areas, Collected water is stored in above ground tank from where it is used for maintenance of greenery.



CHAPTER - 9

ELECTRICITY CONSUMPTION (IN UNIT) AND MANAGEMENT

9.1 General Details:

Sl.No.	PARTICULARS	DETAILS	
1	Name & Address of College	Raidighi College P.O. Raidighi, South 24 Pargans – 743 383.	
	Web Site	www.raidighicollege.in	
2	Name of Contact Officer	Dr. Sasabindu Jana	
	Designation	Principal	
	Name of Alternative Officer	Dr. Madhumita Majumder (Assistant Professor HOD, Dept. of Botany)	
	Designation	Assistant Professor – HOD, Dept. of Botany	
3	Telephone No.	NA	
	Mobile No.	8777239612	
	Fax No.		
	e-mail ID	raidighicollege95@gmail.com	
	No. of shift	10A. TO 5 PM	
	No. of Employees (Approx)	73	
4	Electricity Consumption	Imported (Purchased) 21027	
5	Specific Energy Consumption	Fuel	Electricity
		8080/-	Rs. 39,398/- (Per month)
6	LPD	1,952/- per month	
7	EPI	0.19	

9.2 Electrical Details

a) Transformers

	No. 1
Voltage Ratio	N/A
KVA	N/A
% Impedence	N/A

b) Electricity Consumption

	Particulars	Demand
A	Contract demand KVA	113
B	Maximum demand	113
C	Total Energy units consumed / year	21027
D	Avg. Power Factor(P.F.)	0.97
E	Avg. Energy bills(Rs/month)	Rs.39,398/-

c) Detailed list of Electric Motors operating in the college

S.NO.	NAME OF THE PLANT	RATING OF MOTOR (KW)	NO. OF MOTORS
1	Raidighi College, Raidighi	7.4	2 nos.

d) **Connected Load**

	EQUIPMENT	TOTAL NUMBERS	LOAD IN KW (TOTAL)
A	Motors : Greater than 10kW	NIL	NIL
	: Less than 10 kW	2Nos.	7.4 KW
B	AC & Ventilation with TR capacity		
a)	Others (Package ACs/ Split ACs / Windows ACs) with TR	Room AC of Split/Window type – 9 Nos. 31.59 KW	
C	Total Process Load (in kW)	38.99 KW	
D	Total Lighting Load (in kW) & Luminaries details	No's of lighting luminaries (LED+T/L+ (including fan) Tube Light, Led Light, Metal etc.= 23.81 KW Electric Fan - 10 KW	
	Total Load (in kW)	72.8 kw	

A. Lux Measurements :

Sl.no.	Room	LUX level	Remarks
1.	AJC Bose Bhavan		
	Ground Floor	242,225,237.231,236,242	
	1 st floor	244,240,252,243,246,252	
	2 nd floor	259,249,251,266,244,253	
2.	Swami Vivekananda Bhavana	LUX level	
	Ground Floor	242,253,262,245,233,248	
	1 st floor	262,233,241,247,246,254	
	2 nd floor	249,241,243,236,252,243	
	3 rd floor	251,248,236,241,252,248	

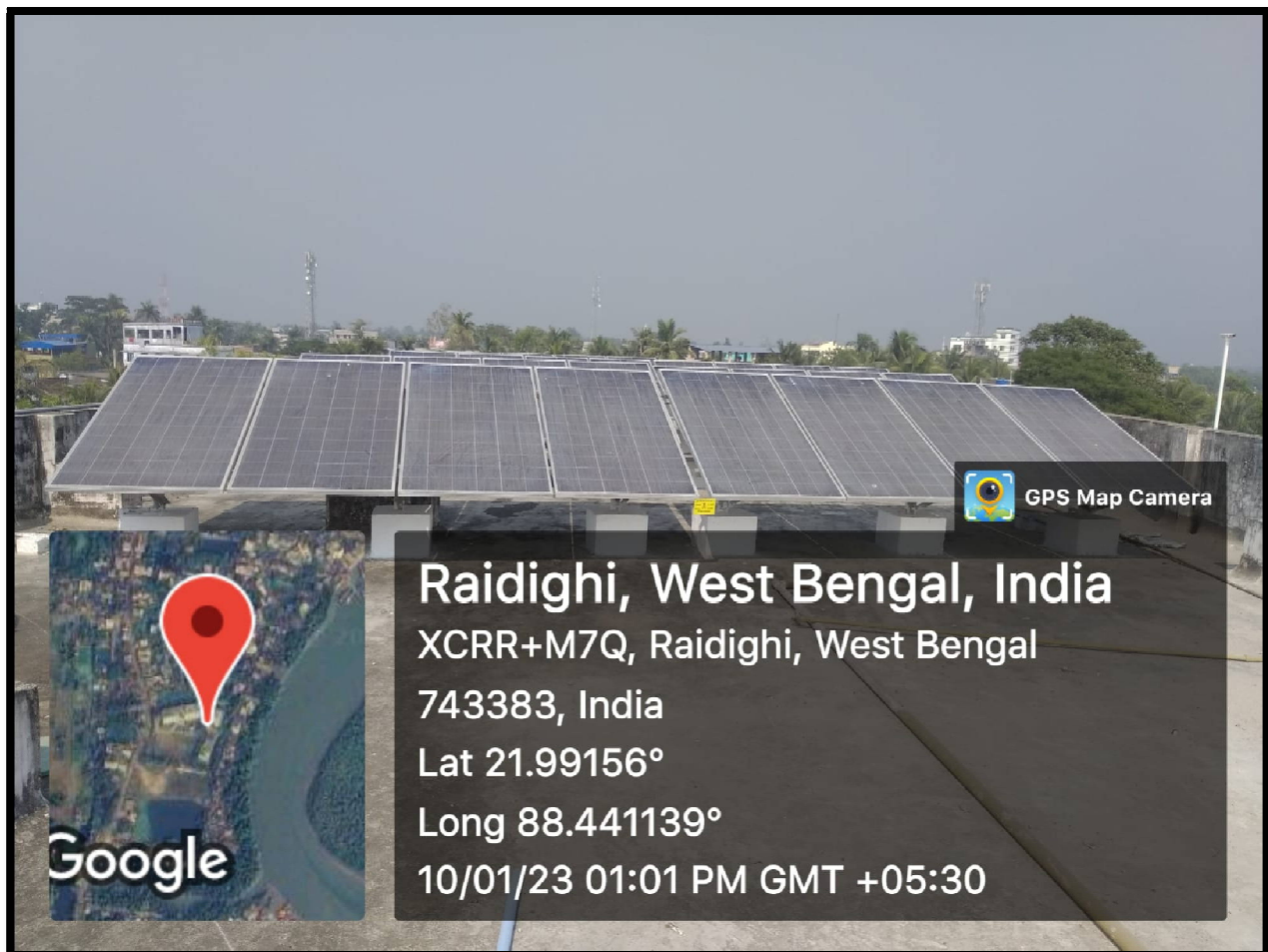
Illumination Level Comparison

Area	Average Lighting Level (LUX)	NBC Recommended
AUJC Bose Bhavan	245	300-500
Swami Vivekananda Bhavana	247	300-500

Remarks: Lights needs cleaning at an interval of one month and old light to be replaced by new to get desired LUX value

9.3 Use of Alternate Energy

A roof top solar panel of array capacity of 20 kw power supply has been installed funded from WB Renewable Energy Development Agency at Raidighi College by M/s. Larsen & Turbo Ltd. On 26.06.2022. this bi-directional meter has been installed with Solar PV module of Adani make of 325 Wp of each module, consists of 62 nos. of total such modules, along with energy meter, array junction box, inverter interfacing panel, grid interfacing panel, earth pit chamber, data logger, net meter and fire fighting system. All the structural components are non magnetic SS304, inverter and grid interfacing panels are L&T and LS Power control Ltd. Make. Earthing cable are 3 m long with 50 mm diameter with 10SWG GI wire. Fire extinguisher is installed with 6kg dry ABC type 1 stand with 4 buckets.



CHAPTER - 10

Waste Management

The present Prime Minister of India Sri Narendra Modi launched 'Swachh Bharat Abhiyan' (Clean India Mission) on 2nd October, 2014. In this mission, the proper use of dust/waste bins is one of the major priorities. To implement this mission, collective mass effort is necessary. For proper segregation and management proper use of waste bins is the only solution for waste management purpose in the college campuses.

10.1 Solid Waste

For collection of solid waste, separate bins have been placed at selected locations. Solid waste is dumped in a sludge pit.

System of collection & disposal of solid waste centrally does not exist in the Panchayet area where the College is located.





Raidighi, West Bengal, India
XCRR+M7Q, Raidighi, West Bengal
743383, India
Lat 21.991707°
Long 88.441129°
10/01/23 01:40 PM GMT +05:30

10.2 Liquid Waste

Waste water from toilet etc are disposed through septic tank. Waste water from other points are discharged in panchayat drains.

10.3 E-Waste

Substantial quantity of e waste is generated due to extensive use of computer.

All members particularly students have been advised not to throw used pendrive etc. any where, but to keep in designated bins. Waste thus collected is stored in secured place.

E-Waste is accumulated in a separate room, stock of such waste as on date is quite substantial.



CHAPTER - 11

Biodiversity status of the College Campus

11.1 Introduction

Raidighi College campus is very rich in the term of biodiversity. To conserve this biodiversity, our first need is to learn about the existing diversity of the place. Unless we know whom to conserve, we will not be able to plan proper conservation initiatives. Also, it is important to have an understanding of the biodiversity of an area so that the local people can be aware of the richness of biodiversity of the place they are living in and their responsibility to maintain that richness.

11.2 Objective

The main objective of this study is to get a baseline data of bio-diversity of the area which will include:

1. Documentation of the floral diversity of the area: its trees, herbs, shrubs, climbers and aquatic vegetations.
2. Documentation of the major faunal groups like mammals, reptiles, amphibians, birds and among the insects, butterflies and dragonflies.
3. Documentation of the specific interdependence of floral and faunal life.

Survey Area

Raidighi College premises and its surrounding areas: Situated at Raidighi bus stand, P.O. Raidighi, Dist. South 24 Parganas– 743 383.

Location Map



11.3 Method of Study

Brief methodology for the floral and faunal survey is given below:

- a) Sampling was done mostly in random manner.
- b) Surveys were conducted for the maximum possible hours in day time.
- c) Tree species were documented through physical verification on foot and photographed each species as much as possible.
- d) The total area was surveyed by walking at day time.
- e) For faunal species we emphasized mainly on the direct sighting. Also call of various birds and amphibians and nesting of some faunal species were considered as direct evidences.
- f) Observing mammals depend critically on the size of the species and its natural history. Diurnal species are common and highly visible. Nocturnal species, however, are rare and difficult to detect. Small mammals like the field rats were found near their burrows, particularly during their entry or exit times in or out from their burrows respectively. In some cases, deposits and footprints were also observed that served as a potential clue for the presence and absence of the concerned species. These secondary evidences were all noted with time and space co-ordinates.
- g) Birds are often brightly coloured, highly vocal at certain times of the year and relatively easy to see. Sampling was done on the basis of direct sighting, call determination and from the nests of some bird species

- h) Reptiles were found mostly by looking in potential shelter sites like crevices of building, logs, tree hollows and leaf litter and also among and underneath the hedges. Sometimes some species, particularly the garden lizards were also observed in open spaces (on twigs and branches and even on brick constructions) while they were basking under direct and bright sunlight.
- i) Amphibians act as potential ecological indicators. However, most of them are highly secretive in their habits and may spend the greater part of their lives underground or otherwise inaccessible to biologists. These animals do venture out but typically only at night. They were searched near pond, road beside wetland and in other possible areas. Diurnal search operations are also successful.
- j) Active invertebrates like the insects require more active search. For larger winged insects like butterflies, dragonflies and damselflies, random samplings were carried and point sampling was also done.
- k) The easiest way to observe many of the invertebrates is simply looking for them in the suitable habitat or microhabitat. Searching was carried out under stones, logs, bark, in crevices in the walls and rocks and also in leaf litter, dung etc. slugs and snails are more conspicuous during wet weather and especially at night when they were found using torch.

11.4 Plant diversity in the College Campus

Actually, the college campus is eco-friendly with rich flora of bryophyte, pteridophytes, gymnosperms and flowering plants like trees, shrubs, herbs, grasses and aquatic plants too. The herbs mostly recorded are naturally grown in the campus. These plants are listed and depicted as following:



Caryota urens
Fish tail palm

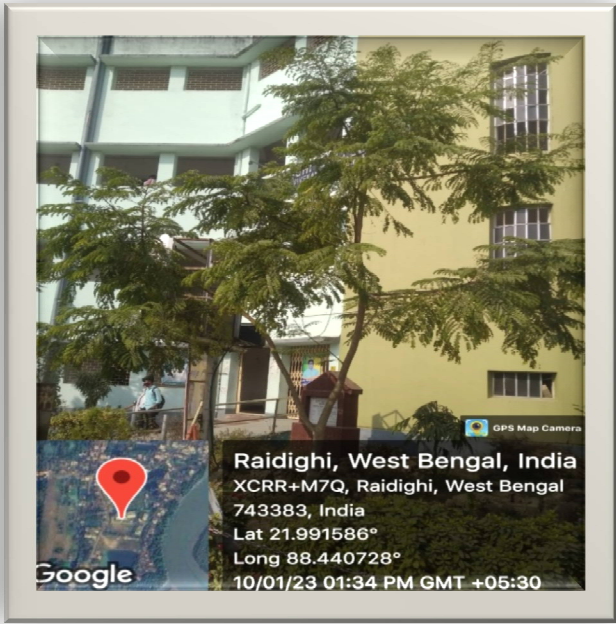


Ravenala madagascariensis
Panthapadap

Tree

Sl.No.	Scientific name of the Plants	Family	Local/Common Names
1	<i>Casuarina equisetifolia</i> L.	Casuarinaceae	Jhau/Australian Pine
2	<i>Thespesia populnea</i> Corr.	Malvaceae	Paresh pipul /Indian Tulip
3	<i>Eucalyptus citriodora</i> (Hook.) K.D. Hill & L.A.S. Johnston	Myrtaceae	Lemon Scented Gum
4	<i>Alstonia scholaris</i> B. Br.	Apocynaceae	Saptaparni/Chhatim
5	<i>Callistemon linearis</i> Schrad.	Myrtaceae	Bottlebrush
6	<i>Mangifera indica</i> L.	Anacardiaceae	Aam, Mango
7	<i>Mimusops elengi</i> L	Sapotaceae	Bokul
8	<i>Neolamarckia cadamba</i> (Roxb.) Bossler	Rubiaceae	Kadam
9	<i>Acacia auriculiformis</i> A. Cunn. ex. Benth.	Fabaceae	Akashmoni/Sonajhuri
10	<i>Monoon longifolium</i> (Sonn.)B.Xue & R.M.K.Saunders	Annonaceae	Debdaru
11	<i>Livistona chinensis</i> (Jacquin.) R. Brown ex Martius	Arecaceae	Chinese Fan Palm/Fountain Palm
12	<i>Ficus religiosa</i>	Moraceae	Asath tree

Sl. No	Scientific name of the Plants	Family	Local/Common Names
13	<i>Terminalia arjuna</i> (Roxb.) Wight & Arn.	Combretaceae	Arjun
14	<i>Ziziphus jujuba</i>	Rhamnaceae	Tal/ Fan Palm
15	<i>Phyllanthus emblica</i> L.	Euphorbiaceae	Amlaki
.			





Shrubs

Sl. No	Scientific name of the Plants	Family	Local/Common Names
1	<i>Murraya exotica</i> L.	Rutaceae	Kamini
2	<i>Hibiscus rosa-sinensis</i> L.	Malvaceae	Jaba/China rose
3	<i>Gardenia jasminoides</i> J.Ellis	Rubiaceae	Gandharaj
4.	<i>Nerium oleander</i> L	Apocynaceae	Karabi

Gymnosperm

Sl. No	Scientific name of the Plants	Family	Local/Common Names	Remarks
1	<i>Cycas circinalis</i>	Cycadaceae	Cycas	Ornamental
2	<i>Zamia</i> sp	Zamiaceae		Ornamental
4.	<i>Thuja</i> sp	Cupressaceae	Jhau	Ornamental



Cycas SP & Zamia SP

Pteridophyta

Sl. No	Scientific name of the Plants	Family	Local/Common Names	Remarks
1	<i>Ophioglossum reticulatum</i> L.	Ophioglossaceae	Adder's tongue	Rare in occurrence
2	<i>Pteris vittata</i> L.	Pteridaceae	Chinese brake	
3	<i>Ampelopteris prolifera</i> (Retz.) Copel	Thelypteridaceae		
4.	<i>Christella dentata</i>	Thelypteridaceae		



Ophioglossum sp.
**A rare pteridophyte
growing in college campus**



Moss growing in campus

Bryophyta

Sl. No	Scientific name of the Plants	Family	Local/Common Names
1	<i>Cyathodium</i> sp	Targioniaceae	
2	<i>Semibarbula</i> sp	Pottiaceae	Velvet moss

Lichen

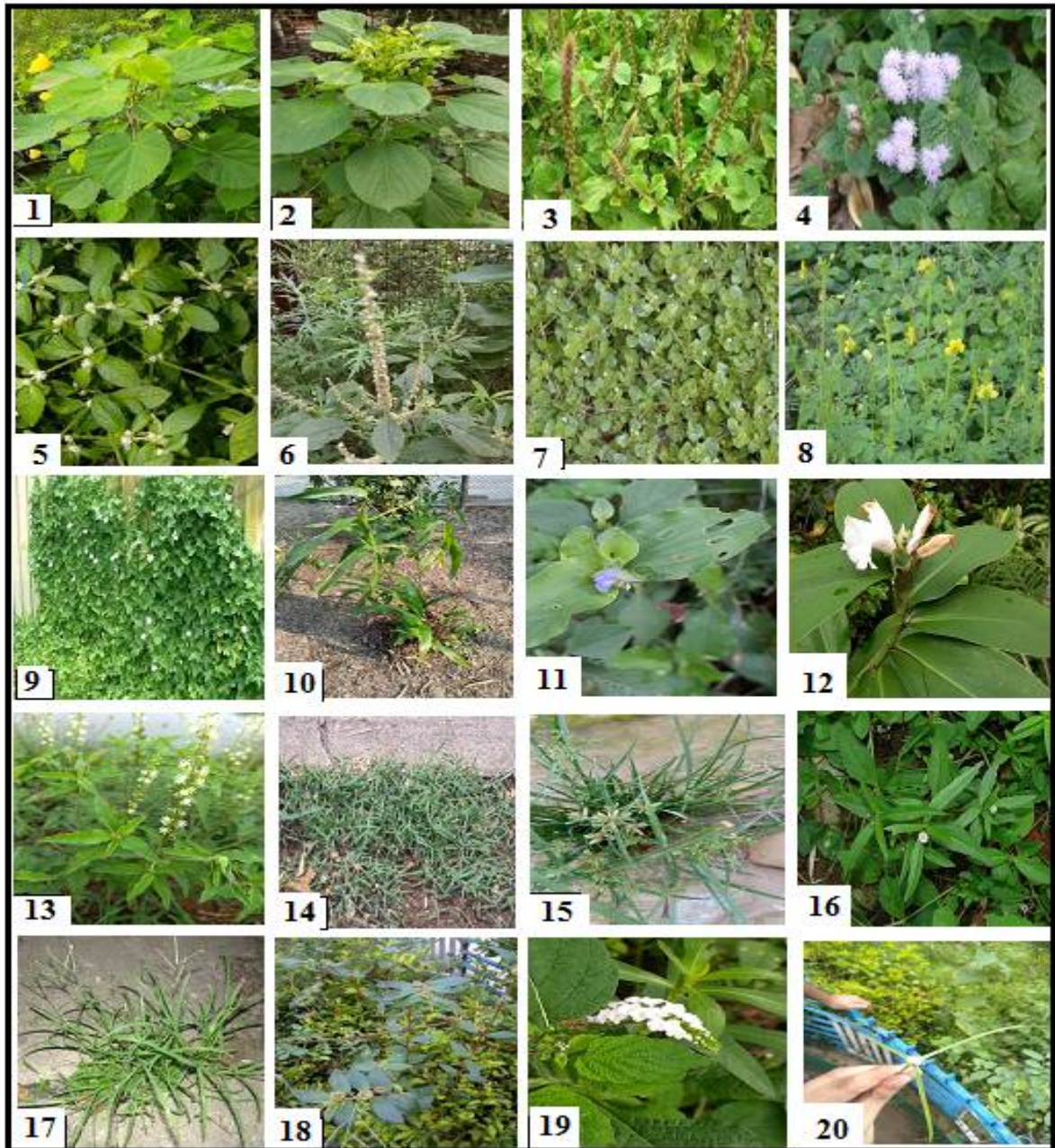
Different Crustose lichens are found to grow over the several tree trunks of the college. It is well known that lichen is the symbiotic association between algae and fungi and a very important indicator of pollution-free environment.



Crustose Lichen growing on tree bark in college campus

Herbs

Sl.No.	Scientific name of the Plants	Family	Local/Common Names
1	<i>Nicotiana plumbaginifolia</i> Viv.	Solanaceae	Bontamak
2	<i>Phyla nodiflora</i> (L.)Greene	Verbenaceae	Bhuin-okra
3	<i>Nasturtium indicum</i> (L)DC.	Brassicaceae	Bon-sorse
4	<i>Euphorbia hirta</i> L.	Euphorbiaceae	
5	<i>Physalis minima</i> L.	Solanaceae	Bon- tepari
6	<i>Solanum nigrum</i> L.	Solanaceae	Kakmachi
7	<i>Solanum sisymbriifolium</i> Lam.	Solanaceae	Kanta- begun
8	<i>Oldenlandia corymbosa</i> L.	Rubiaceae	Khetpapa
9	<i>Oxalis corniculata</i> L.	Oxalidaceae	Amrul
10	<i>Parthenium hysterophorus</i> L.	Asteraceae	
11	<i>Phyllanthus urinaria</i> L.	Euphorbiaceae	Bhuin- amla
12.	<i>Polygonum hydropiper</i> (L.) Delabre	Polygonaceae	Panimorich
13	<i>Pouzolzia zeylanica</i> (L.) Benn.	Urticaceae	
14	<i>Rumex dentatus</i> L.	Polygonaceae	Bon-palong
15	<i>Lindernia crustacea</i> (L.) F.Muell.	Scrophulariaceae	
16	<i>Mazus pumilus</i> (Burm.f) Steenis	Scrophulariaceae	
17	<i>Scoparia dulcis</i> L.	Scrophulariaceae	Bon-dhone
18	<i>Blumea lacera</i> L.	Asteraceae	Kukshim
19	<i>Vernonia cinerea</i> (L.) Less.	Asteraceae	
20	<i>Alternanthera sessilis</i> (L.)DC.	Amaranthaceae	
21	<i>Alternanthera philoxeroides</i> (Mart.)Griseb	Amaranthaceae	Sanchi
22	<i>Gnaphalium indicum</i> L.	Asteraceae	
23	<i>Cynodon dactylon</i> L.	Cyperaceae	Durba
24	<i>Eclipta prostrata</i> (L.) L.	Asteraceae	Keshut
25	<i>Eleusine indica</i> (L.)Gaertn.	Poaceae	
26	<i>Ruellia tuberosa</i> L.	Acanthaceae	Chatpati
27.	<i>Eragrostis tenella</i> Steud.	Poaceae	
28	<i>Coix lachrymal-jobi</i> L.	Poaceae	
29	<i>Enydra fluctuens</i> Lour.	Asteraceae	Hinche
30	<i>Cyperus rotundus</i> L.	Cyperaceae	Mutha
31	<i>Cyperus iria</i> L.	Cyperaceae	
32	<i>Euphorbia microphylla</i> L.	Euphorbiaceae	
33	<i>Gomphrena celosoides</i> Mart.	Amaranthaceae	
34	<i>Ludwigia octovalvis</i> (Jacq.) Raven	Onagraceae	
35	<i>Lindenbergia indica</i> (L.) Vatke.	Scrophulariaceae	Halud basanti
36	<i>Boerhaavia diffusa</i>	Nyctaginaceae	Punarnaba



Herbs growing in the campus: (1) *Abutilon indicum*, (2) *Acalypha indica*, (3) *Aervaaspera*, (4) *Ageratum conyzoides*, (5) *Alternanthera sessilis*, (6) *Amaranthus spinosus*, (7) *Boerhaavia diffusa*, (8) *Cleome viscosa*, (9) *Coccinia grandis*, (10) *Coix lacryma-jobi*, (11) *Commelina benghalensis*, (12) *Cheilocostus speciosus*, (13) *Croton bonplandianus*, (14) *Cynodon dactylon*, (15) *Cyperus rotundus*, (16) *Eclipta prostrata*, (17) *Eleusine indica*, (18) *Euphorbia hirta*, (19) *Heliotropium indicum*, (20) *Kyllinga brevifolia*.

11.5 Medicinal Plants in the Campus:

A number of plants with medicinal properties are growing in the campus, specially in the medicinal plant garden.

Sl. No.	Common Name	Scientific name	Uses
1	Ghrita Kumari	<i>Aloe barbadensis Mill</i>	Leaves – Juice applied on head for tranquility in case of insanity. Fleshy part – in constipation, dyspepsia, menstrual complaints, eczema, diarrhea and dysentery.
2	Basak	<i>Justicia adhatoda</i>	Cough, colds, asthma, bronchodilator
3	Thankuni	<i>Cantella asiatica (Linn.) Urban</i>	Dysentery, Jaundice, leprosy
4	Kulekhara	<i>Hygrophila schulli (Buch-ham.) M.R.et.S.M.</i>	Skin disease, anaemia, insomnia, rheumatism.
5	Apang	<i>Achyranthes aspera Linn.</i>	Anti inflammatory and uterine stimulant activity, rheumatism, Hydrophobie.
6	Kalmech	<i>Andrographis paniculata (Burm.f.)</i>	Fever, dysentery, dyspepsia, improves liver function, Leaves – in case of irregular stool, loss of appetite; roots – given to children to cure general debility.
7	Harjora	<i>Cissus quadrangularis Linn. Syn. Vitis quadrangularis</i>	Leaves – in bowel complaints; stem to cure scurvy, irregular menstruation, asthma, sap applied externally on forehead to cure one-sided headache.
8	Chhatim	<i>Alstonia scholaris</i>	Leaves – in fever cold and cough.
9	Amlaki	<i>Emblica officinalis Gaertn</i>	Fruits – treat vomiting, leprosy, piles, anaemia; leaves – in ophthalmia.
10	Kakmachi	<i>Solanum nigrum Linn.</i>	Whole plant – in asthma, bronchitis, rheumatism, hiccup, heart disease, roots – to treat urinary disease; leaves – as laxative; green fruits – paste applied on leucorrhoea; ripe fruits – to treat tuberculosis.
11	Nayantara	<i>Catharanthus roseus (Linn.) G Don.</i>	Entire plant – to improve memory, to treat leucorrhoea, leukemia, diabetes mellitus, hypertension, intestinal works; roots – to cure septic wounds, asthma, cancer; leaves – to reduce high blood pressure, blood dysentery; latex – applied to cure cancerous wounds.
12	Ramtulsi	<i>Ocimum gratissimum Linn.</i>	Leaves – Decoction of the leaf applied to treat septic wounds, Seeds – soaked in water and taken very cooling and refreshing drink.
13	Muktijhuri	<i>Acalypha indica Linn.</i>	Leaves – fresh juice applied to affected parts of the body in case of insect or snake-bites.
14	Jaba	<i>Hibiscus rosasinensis Linn.</i>	Flowers – in black colour of hair, female disease; leaves – soothing, used in growth of hair, Roots – in cold.
15	Telakucha	<i>Coccinia grandis (Linn.) Voigt</i>	Roots – in case of vomiting, burning sensation of hands and feet; Leaves – in cough and skin disease.
16	Jhau	<i>Cryptomeria japonica</i>	Essential oil used in medicine and cosmetics.
17	Rangan	<i>Lxora coccinea Linn.</i>	Flowers – in blood dysentery, gonorrhoea; roots – in wounds of elementary canal, blood dysentery.
18	Blue porterweed	<i>Stachytarpheta jamaicensis (Verbenaceae)</i>	Root, leaves
19	Adlay millet	<i>Coix lacryma-jobi</i>	Fruit



Coix lacryma-jobi



Stachytarpheta jamaicensis



GPS Map Camera
Raidighi, West Bengal, India
XCRR+M7Q, Raidighi, West Bengal
743383, India
Lat 21.991627°
Long 88.441205°
10/01/23 01:41 PM GMT +05:30
Google



GPS Map Camera
Raidighi, West Bengal, India
XCRR+M7Q, Raidighi, West Bengal
743383, India
Lat 21.991594°
Long 88.440776°
10/01/23 01:36 PM GMT +05:30
Google

11.6 Faunal diversity in the College Campus

Raidighi College situated in sundarban coastal region of south 24 parganas district, west Bengal. A survey was carried out to find the animal diversity in the campus of Raidighi College. The survey focused on the diversity of Arthropoda, Butterfly, Amphibian, Reptile, Birds, and mammals.

Sl. No.	Local name Identify	Scientific Characteristic features / folk description	Indicative	Habitat	Importance	Present status*	Local Distribution
1	Kathberali	Three striped palm Squirrel <i>Psittacul akrameri</i>	Grey body with three striped.	Large canopy-trees and ground level	Pollination, seed dispersal, nutrient recycling	common	in and around Raidighi College Campus throughout village
2	Kathberali	Three striped palm Squirrel <i>Psittacul akrameri</i>	Grey body with three striped.	Large canopy-trees and ground level	Pollination, seed dispersal, nutrient recycling	common	in and around Raidighi College Campus throughout village
3	Kak (House Crow)	<i>Corvus splendens</i>	Entirely black body	Very common on all habitats. Nests seen on big old trees.	visiting dead & rotten bodies as "Scavengers"	Plenty	Throughout college campus and Surrounding market areas
4	Pecha (Owl)		Grey body with white mouth	hostel building tree holes; Nests seen on old trees	Significant role in local pest control, for e.g., lowering the mouse population.	seen very frequently	Raidighi college Campus; Throughout other areas
5	Cheel/Black Kite	<i>Milvus migrans</i>	Pale-Black body.	Large trees, roadside lamp strands	Scavenger; top predator	numerous	Through out this areas
6	Kokil/Asian Koel	<i>Eudynamys scolopacea</i>	Entirely Black Body.	Often seen in tree canopy during February-March.	As pollinator and scavengers. Adds aesthetic value also	numerous	throughout college campus and this village areas

Sl. No	Local name Identify	Scientific Characteristic features / folk description	Indicative	Habitat	Importance	Present status*	Local Distribution
7	Spotted Dove/ Chhite Ghughu	<i>Sreptopelia chinensis</i>	Greyish-brown body	Tree branches and ground	Graminivore, occasional insectivore; maintains ecosystem balance	numerous	Mostly in college campus
8	House sparrow/ Chorai	<i>Passer domesticus</i>	Pale brown	Almost everywhere	Seed eaters, plays role in seed dispersal	numerous	Almost everywhere
9	Red-Vented Bulbul/Bulbul	<i>Pycnonotus cafer</i>	Black body with red vent	On tree branches	omnivore	numerous	Mostly inside Raidighi College, also on some road side trees.
10	Common Myna/ Salik	<i>Acidotheres tristis</i>	Grey-brown body	Almost everywhere	omnivore	numerous	Through out this areas
.11	Asian Pied Starling/ Guye Salik	<i>Gracupica contra</i>	Greyish brown	On tree branches	omnivore	rare	in college campus, also on some road side trees.
12	Woodpecker	<i>Dinopium benghalense</i>	red, yellow, brown, golden body colour	On tree branches	Mainly insectivore, occasionally seed eater	Not much common	in college campus, also on some road side trees.
13	Moutusi/ Purple sunbird/ Durga	<i>Cinnyris</i>	purple coloured, metallic shine in	On shrubs	Nectarivore, plays	common	in college campus, also
14	Tuntuni	<i>asiaticus</i>	males		role as pollinator		on some road side trees.
15	Magpie Robin	<i>Copsychus saularis</i>	Black and white body colour	On tree branches	Mostly insectivore, occasionally seed eater, plays role as pollinator	Moderately numerous	Through out college campus and Ward no. 26.
16	Tiktiki (House Gecko)	<i>Hemidactylus sp</i>	Yellow is brown body	College garden and constructions	Pest, control of insect population		Through out this areas
17	Garden Lizard	<i>Calotes versicolor</i>	Variable colour	College campus	Seed disperser, pollinator	common	College campus and village areas

Sl. No	Local name Identify	Scientific Characteristic features / folk description	Indicative	Habitat	Importance	Present status*	Local Distribution
18	Dhere Indur (Rat)	Rattus sp	Black or ashy black	Garbage dumps	Pest, transmission of parasites	common	Through out this areas
19	Kecho/ Earthworm	Lumbricus sp.	Variable morphology	Moist soil, sub surface level	Nutrient recycling	common	College campus and moist patches throughout areas
20	Cockroach	Periplaneta sp.	brown	Variable places	pest	common	College campus and moist patches throughout this areas
21	Dragonfly	Anisoptera	Variable in forms	Vegetation patches	pollinator	common	College campus and moist patches throughout this areas
22	Damsefly	Zygoptera	Variable in forms	Vegetation patches	pollinator	common	College campus and moist patches Throughout this areas
23.	Honey bees	Apis sp.	Brownish yellow	Floral units, fruit shops, organic debris	pollinator	common	College campus and moist patches throughout this areas
24	Grasshopper	Orthoptera	greenish	Grassy patches, herbs	Pollinator , nutrient recycler	common	College campus and moist patches throughout this areas

Animal Diversity (Domesticated)

Sl. No	Name of the breed	Indicative characteristics	Importance: advantages and disadvantages of domestication of breed	Source of the breeds	Opinions(if any) of the locals on changing pattern of domestication	Availability
1	Kukur (Dog) <i>Canis familiaris</i>	Neri/Road side sheltered	Mainly act as “scavengers”, night guard for a particular area	Desi/domesticated	Their number is increasing day by day	Plenty, throughout college campus
2	Beral(Cat) <i>Felis catus</i>	Strong flexible body; sharp teeth & Claws; usually white in colour, rarely black.	Decreasing rat Population, disturbs local people by eating their foods	Stray/Feral	Their number is increasing day by day	Plenty, throughout the college campus
3	Murgi(Hen) <i>Gallus gallus domesticus</i>	i.Poultry— Small compact light body. ii.Desi—small head with well set comb.	These are main protein food for local people	i.Poultry ii.Desi	Number remained same	Available at street , every Chicken Meat Shop ; some local people are build poultry farm
4	Chhagal (Goat) <i>Capra aegagrus hircus</i>	i.Jumnapari— long ears with short horns, upward curved tail, various colours— black, white and brown	These are domesticated for their meats and milk	i.Jumnapari ii.Nabad	Due to high price market demand is going to be less	Earlier Desi Goat was domesticated at every house, but recently due to
5	Tia (Rose ringed Parrot) Psittaciformes	Rose-ringed— green coloured body with red beak and rose-ring neck	Domesticated inside cage by very few people	Rose-ring	Number decreased	People are not interested in domestication of birds.
6	Badri (Parrot)	Yellow, blue, green with black stripes, grey white	Domesticated At the house near College Campus.	yellow, blue, green with black stripes, grey-white	Number decreased	Breed



The college campus has a rich faunal diversity with the existence of following members:

Sl. No	Division	Common Name	Scientific Name	Bengali Name
1.	Annelida	Earthworm	<i>Pheretima</i> sp.	Kencho
2.	Arthropoda	Carpenter ant	<i>Camponotus</i> sp.	Kath pipre
3.	Arthropoda	Fire ant	<i>Solenopsis</i> sp.	Pipre
4	Arthropoda	Yellow paper wasp	<i>Polistes</i> sp.	Bolta
5	Arthropoda	Italian bee	<i>Apis mellifera</i>	Moumachhi
6	Arthropoda	Little bee	<i>Apis florea</i>	Moumachhi
7	Arthropoda	Termite	<i>Microtermes</i> sp.	Uipoka
8	Arthropoda	<i>Water strider</i>	<i>Gerris</i> sp.	
9	Arthropoda	Dragonfly	<i>Tramea limbata</i>	Phoring
10	Mollusca	Freshwater snail	<i>Bellamya bengalensis</i>	Gugli
11	Mollusca	Terrestrial snail	<i>Achatina fulica</i>	Sthal Shamuk
12	Mollusca	Apple snail	<i>Pila globosa</i>	Apel shamuk



Data collection from raidighi college campus.



Reptiles

Sl. No.	Common name	Scientific Name	Bengali Name
1	Checkered Keelback	<i>Xenochrophis piscator</i>	Joldhora
2	Buff Striped Keelback	<i>Amphiesma stolatum</i>	Hele
3	Rat Snake	<i>Zamenis longissimus</i>	Darash
4	Skink	<i>Lampropholis sp.</i>	Anjani
5	Oriental Garden Lizard	<i>Colotes versicolor</i>	Girgiti
6	Common House Gecko/Gekko	<i>Hemidactylus frenotus</i>	Tiktiki



Birds

A total of 63 types of bird species were found in the campus, which is quite a good number, in spite of the industrialized surrounding around it.

Total bird species encountered in the college campus.

Sl. No.	Common Name	Scientific Name
1	Indian cormorant	<i>Phalacrocorax fuscicollis</i>
2	Little cormorant	<i>Microcarbo niger</i>
3	Little Egret	<i>Egretta garzetta</i>
4	Cattle Egret	<i>Bubulcus ibis</i>
5	Black Kite	<i>Milvus migrans</i>
6	Black shouldered kite	<i>Elanus axillaris</i>
7	Common kestrel	<i>Falco tinnunculus</i>
8	Shikra	<i>Accipiter badius</i>
9	White breasted water hen	<i>Amaurornis phoenicurus</i>
10	Pond Heron	<i>Ardeola grayii</i>
11	Common sandpiper	<i>Actitis hypoleucos</i>
12	Yellow Footed Green pigeon	<i>Treron phoenicoptera</i>
13	Rock pigeon	<i>Columba livia</i>
14	Spotted dove	<i>Spilopelia chinesis</i>
15	Ring necked dove	<i>Streptopelia capicola</i>
16	Alexandrian parakeet	<i>Psittacula eupatria</i>
17	Common Cuckoo	<i>Cuculus canorus</i>
18	Spotted Owlet	<i>Athene brama</i>
19	White throated Kingfisher	<i>Halcyon smyrnensis</i>
20	Small blue Kingfisher	<i>Alcedo atthis</i>
21	Stork billed Kingfisher	<i>Pelargopsis capensis</i>
22	Pied Kingfisher	<i>Ceryle rudis</i>
23	Common Hoopoe	<i>Upupa epops</i>
24	Chestnut headed Bee-eater	<i>Merops leschenaulti</i>
25	Green Bee-eater	<i>Merops orientalis</i>
26	Black-rumped Flameback	<i>Dinopium benghalense</i>
27	Brown-capped Pygmy Woodpecker	<i>Yungipicus nanus</i>
28	Coppersmith Barbet	<i>Megalaima haemacephala</i>
29	Blue throated Barbet	<i>Megalaima asiatica</i>

Sl. No.	Common Name	Scientific Name
30	Lineated Barbet	<i>Megalaima lineata</i>
31	Brown-capped Woodpecker	<i>Dendrocopos nanus</i>
32	Brown Shrike	<i>Lanius cristatus</i>
33	Long tailed Shrike	<i>Lanius schach</i>
34	House Sparrow	<i>Passer domesticus</i>
35	Black hooded Oriole	<i>Oriolus xanthornus</i>
36	Golden Oriole	<i>Oriolus oriolus</i>
37	Black Drongo	<i>Dicrurus macrocercus</i>
38	Bronze winged Drongo	<i>Dicrurus aeneus</i>
39	Common Myna	<i>Acridotheres tristis</i>
40	Asian pied Starling	<i>Gracupica conta</i>
41	Chestnut tailed Starling	<i>Sturnia malabarica</i>
42	Jungle Myna	<i>Acridotheres fuscus</i>
43	Rufous Treepie	<i>Dendrocitta vagabunda</i>
44	Common Crow	<i>Corvus brachyrhynchos</i>
45	Red vented Bulbul	<i>Pycnonotus cafer</i>
46	Red whiskered Bulbul	<i>Pycnonotus jocosus</i>
47	Common Prinia	<i>Prinia inornata</i>
48	Ashy Prinia	<i>Prinia socialis</i>
49	Common Babbler	<i>Turdoides caudata</i>
50	Brown breasted Flycatcher	<i>Muscicapa muttui</i>
51	Taiga Flycatcher	<i>Ficedula albicilla</i>
52	Tailorbird	<i>Orthotomus sutorius</i>
53	Bluethroat	<i>Luscinia svecica</i>
54	Pied Bushchat	<i>Saxicola caprata</i>
55	Oriental Magpie robin	<i>Copsychus saularis</i>
56	Pale billed Flowerpecker	<i>Dicaeum erythrorhynchos</i>
57	White Wagtail	<i>Motacilla alba</i>
58	Pied Wagtail	<i>Motacilla alba</i>
59	Yellow Wagtail	<i>Motacilla flava</i>
60	Citrine Wagtail	<i>Motacilla citreola</i>
61	Purple rumped Sunbird	<i>Leptocoma zeylonica</i>
62	Silver billed Munia	<i>Lonchura punctulata</i>
63	White throated Fantail	<i>Rhipidura albicollis.</i>



Mammals

Sl. No.	Common name	Scientific name	Bengali name
1	Indian palm squirrel	<i>Funumbulus sp.</i>	Kathberali
2	Frugivorous bat	Suborder Megachiroptera	Badur
3	Insectivorous bat	Suborder Microchiroptera	Chamchike
4	House mouse	<i>Mus musculus</i>	Indur
5	Rat	<i>Rattus norvegicus</i>	Dhere indur



Rat

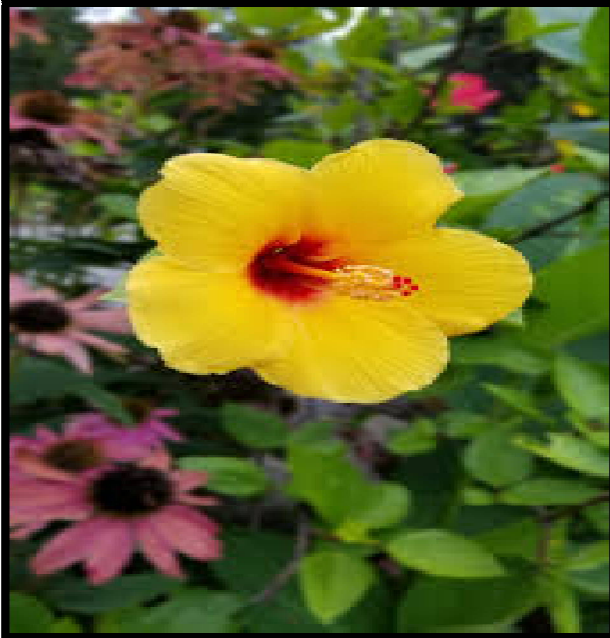


Squirrel

11.07 Checklist of Ferns and Seasonal Flowers

Sl. No.	Local Name	Common Name	Scientific Name
1.	Bird-nest-Fern	Bird-nest Fern	Asplenium sp.
2.	Fern sp.		
3.	Fishtail Fern	Fishtail Fern	Microsorium punctatum
4.	Oakleaf Fern	Oakleat Fern	Drynaria quercifolia
5.	Dog flower, Snadragon	Dog flower, Snapdragon	Antirrhinum majus
6.	Garden stock, Common stock	Garden stock, Common stock	Matthiola incana
7.	Gazania	Gazania	Gazania sp.
8.	Gladiolus	Gladiolus	Gladiolus sp.
9.	Himsagar	Flaming katy, Florist kalanchoe	Kalanchoe blossfeldiana
10.	Maiden Pink	Maiden Pink	Dianthus deltoids
11.	Mike Ful	Amaryllis	Hippeastrum sp.
12.	Pansy, Garden Pansy	Pansy, Garden Pansy	Viola tricolor var.
13.	Petunia	Petunia	Petunia hybrid
14.	Verbena	Verbena	Verbena sp.





CHAPTER - 12

GREEN INITIATIVES

Raidighi College aims to protect and conserve its biodiversity, fresh and clean ambiance through the following green initiatives to protect and conserve nature.

12.1 Plantation Programme

Plantation programme of Raidighi College promotes environment management and conservation in the college campus with the following objectives:

- i) To motivate the students to keep their surroundings green and clean by undertaking plantation of trees.
- ii) Promote ethos of conservation of water by minimizing the use of water.
- iii) Motivate students to imbibe habits and life style for minimum waste generation, source separation of waste and disposing the waste to the nearest storage points.
- iv) To create awareness amongst public and sanitary workers, so as to stop the indiscriminate burning of waste which causes respiratory diseases.
- v) To minimize the use of plastic bags, not to throw the min public places as they choke drains and sewers, cause water logging and provide breeding ground for mosquitoes.
- vi) Organize tree plantation programmes, awareness programmes such as Quiz, essay, painting competitions, rallys, nukkad natak etc. regarding various environmental issues and educate children about re-use of waste material & preparation of products out of waste
- vii) Organize Nature Trail in Wild Life Sanctuaries/Parks/Forest are as to know about the Bio-diversity.

12.2 **Green computing practice**

Being an academic institution, papers are used for various purposes like exam answer sheets, circulars, notices, office work, document printing, and Xeroxing. Since the trees are cut for paper manufacturing, the sequestration of carbon is reduced increasing carbon footprint. To cut down the carbon footprint, the university administration and various departments follow paperless methods of communication by using emails, online forms submission, etc. The paperless work was helpful in reducing tons of CO₂. The tons of biomass are saved by this green computing practice

CHAPTER – 13

Consolidation of Audit Findings

Green Audit will create a greater appreciation and understanding of the impact of college activities on the environment. Raidighi College has successfully been able to identify the impacts on the environment through the various auditing exercises. The green auditing exercise has brainstormed and provided insights on practical ways to reduce negative impact on the environment. Participating in this green auditing procedure has increased knowledge about the need of maintaining sustainability of the college campus. It will create awareness around the use of the Earth's resources in your home, college, local community and beyond. Raidighi Colleges hold adopt an Environmentally Responsible Purchasing Policy, and work towards creating and implementing a strategy to reduce the environmental impact of its purchasing decisions. While good producing companies are rapidly developing in the area of energy efficiency. Many computer hardware and electrical supply companies now cooperate with customers to reclaim old or damaged parts. Raidighi College has a tie with a Company (the entrepreneur is an alumnus of our College) which reclaims old or damaged computers and repair or replace them if possible. Although over twice as expensive up front, LCD monitors are estimated to use 40-60% less energy overall than CRTs. All computers purchased by the college have an Energy Star rating, which is beginning to be a standard requirement for computers.

13.1 Preparation of Action Plan

Management's policies referring to College and approach towards the use of resources need to be considered in purview of green audit report. An environmental policy should be formulated by the management of the college. The college should have a policy on green awareness raising or training programmes for students and staff, seminars on Environment Awareness are often organized by different departments of the institution, green awareness policy right from kitchen staff to procurement policy by the management. Based on the policies, college should have an action plan. The green auditing report will be a base line for the action plan to be evolved.

13.2 Follow up Action and Plans

Green Audit is an exercise which generates considerable quantities of valuable environment and resource management information. The time and effort and cost involved in this exercise is often considerable and in order to be able to justify this expenditure, it is important to ensure that the findings and recommendations of the audit are considered at the correct level within the organization and action plans and implementation programmes will be conducted n the basis of the audit findings.

13.3 Environmental Education

The following environmental education programmes may be implemented in the college before the next green auditing:-

Training programmes in solid waste management, liquid waste management setting up of biodiversity garden, tree management, medicinal plant nursery, vegetable cultivation, water management, energy management, landscape management, pollution mitigation methods, and water filtration methods.

- Give priority to environmental clubs and its programmes
- Set up model rainwater harvesting system, vegetable garden, medicinal plant garden, butterfly garden etc.
- Conduct exhibition on throw away plastic danger, recyclable products etc.
- Display various slogans and pictures to protect environment.
- Implement chemical treatment system for waste water from the laboratories and incinerators.

CHAPTER - 14

ConCl usion and ReCommendations

Green Audit is the most efficient way to identify the strength and weakness of environmental sustainable practices and to find a way to solve problem. Green Audit is one kind of professional approach towards a responsible way in utilizing economic, financial, social and environmental resources. Green audits can “add value” to the management approaches being taken by the college and is a way of identifying, evaluating and managing environmental risks (known and unknown). There is scope for further improvement, particularly in relation to waste, energy and water management. The college in recent years consider the environmental impacts of most of its actions and makes a concerted effort to act in an environmentally responsible manner. Even though the college does perform fairly well, the recommendations in this report highlight many ways in which the college can work to improve its activities and become a more sustainable institution.

14.1 Suggestions

- a) Adopt the proposed Environmentally Responsible Purchasing Policy, and work towards creating and implementing a strategy to reduce the environmental impact of its purchasing decisions.
- b) Increase recycling education on campus.
- c) Increase awareness of Environmentally Sustainable Development – Use every opportunity to raise public, government, industry, foundation, and college awareness by openly addressing the urgent need to move toward an environmentally sustainable future.
- d) Collaborate for Interdisciplinary Approaches – Convene college faculty and administrators with environmental practitioners to develop interdisciplinary approaches to curricula research initiatives, operations, and outreach activities that support an environmentally sustainable future.
- e) Adopt the proposed Environmentally Responsible Purchasing Policy, and work towards creating and implementing strategy to reduce the environmental impact of its purchasing decisions.
- f) Increase reduce, reuse, and recycle education on campus.

14.2 Recommendations:

- a) Declare the campus plastic free and implement it thoroughly.
- b) Renovation of cooking system in the canteen to save gas
- c) Replace incandescent and CFL lamps with LED light
- d) Replace LCD computer monitors with LED monitors
- e) Avoid plastic/thermocool plates and cups in the college level or department level functions.
- f) A separate enclosure needs to be made for storage of scrap and waste materials.
- g) Exhaust Gas shall be monitored, analysed and check regularly
- h) Parking zone of college shall be neat & clean
- i) Use of bicycle within the campus to be encouraged
- j) World Environment Day to be celebrated in college premises every year on 5th June and whole college students and staff shall get involved and take OATH for ENVIRONMENT CONSERVATION not only in college but also in every span of life.
- k) Noise Level Monitoring shall be done as per the guideline of "Noise Pollution (Regulation and Control) Rules 2000
- l) Vehicular exhausts shall be examined regularly in the collage as per Central Motor Vehicle Act 1988.
- m) Total 33% area is to be reserved for plantation
- n) The Biodiversity is to be maintained while considering the plantation in future
- o) Reuse of the water shall be done instead of use of fresh water

- p) Special Tree Plantation shall be celebrated every year on environment day and also competitions for bird species identification and knowing the tree values in terms of medicinal and environment conservation
- q) Water usage reduction techniques to be used
- r) Tree plantation shall be done to maintain biodiversity as well as artificial nesting are to be installed.
- s) Awareness among students and staff about green environment shall be done use tools like display boards.
- t) General house keeping needs to be improved. Scrap, waste materials were found scattered all over the campus. These needs to be accumulated and kept in designated place. Awareness programmes should be conducted more frequently. Inter class competition on cleanliness drive can be thought out.

Medicinal Plant Garden

- Maintenance of garden of medicinal plant is very poor. Fencing is found to be broken. Lot of weeds have grown.
- Medicinal plant garden fencing is to be repaired. Weeds are to be cleared. Regular watering arrangement is to be made.
- Systematic plantation program should be drawn and implemented.

Waste water

- Waste water from canteen is discharged on open ground which is not a healthy practice. It is suggested that the waste water should be channelized to the drain outside the boundary.

Solid Waste:

- Solid waste is to be segregated in to disposable and non disposable waste.
- Disposable waste is to be sold. Some items like debris, broken bricks etc can be used for landfill.
- Non disposable items are to be burnt out.

E-waste:

- Separate enclosure is to be made for storage of E-waste.
- Audit team has been informed that arrangement is being made for disposal through authorized vendor.

Fire Safety Audit

To be required Fire Safety audit..

Sonar Bharat Environment & Ecology Pvt. Ltd.
Parimal Sarker
Director

ACKNOWLEDGEMENT

We want to keep on record the excellent co-operation received from the entire team of Green Club members, Principal , Co-Ordinator of IQAC and other teaching & non-teaching staff. But for their support, this Audit would not have been possible.

Our special word thanks are extended to:

Green club Convenor- Dr. Madhumita Majumder (Assistant Professor HOD, Dept. of Botany)

Green club Deputy Convenor- Dr. Shakuntala Ghorai (Assistant Professor, HOD, Dept. of Microbiology)

Green club Members-

1. Sanat Kumar Purkait (Assistant Professor, HOD, Dept. of Geography)
2. Dr. Arvinda Shaw (Assistant Professor, HOD, Dept. of Food & Nutrition)
3. Dr. Payel Ghosh (Assistant Professor, HOD, Dept. of Mathematics)
4. Dr. Sital Sing (Assistant Professor, HOD, Dept. of Education)
5. Prof. Asim Panda (SACT II, Dept. of Botany)
6. Prof. Debanjan Pandit (SACT I, Dept. of Botany)
7. Prof. Joydeb Roy (SACT II, Dept. of Chemistry)
8. Prof. Abul Kasem (SACT II, Dept. of Zoology)
9. Prof. Durbadal Barman (SACT II, Dept. of Botany)
10. Prof. Sankar Kumar Santra (SACTII, Dept. of Physics)

Dr. Sasabindu Jana (Principal, Raidighi College)

Dr. Sisir Chatterjee (IQAC Co-Ordinator, Associate Professor Dept. of Geography)

Dr. Sudhin Sinha (Teacher Council Secretary, Assistant Professor, Dept. of History)

Prof. Bidyut Saha, (SACT II, Dept. of English, Academic Council Convenor)

For all the assistance provided to the audit team of Sonar Bharat Environment & Ecology Pvt. Ltd.

Sonar Bharat Environment & Ecology Pvt. Ltd.
Parimal Sankar
Director



Certificate of Compliance
INTEGRATED QUALITY CERTIFICATION PRIVATE LIMITED
 hereby certifies that the Quality Management Systems of

Sonar Bharat Environment & Ecology Pvt. Ltd.

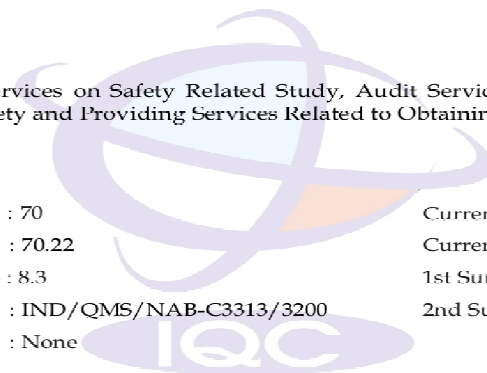
35, Chittaranjan Avenue, 3rd Floor,
 Kolkata - 700 012.

has been assessed and conforms to the
 Quality Management Systems
ISO 9001:2015



Scope: Consultancy Services on Safety Related Study, Audit Services for Energy, Green, Electrical & Safety and Providing Services Related to Obtaining Statutory Approvals

Division	: 70	Current issue date	: 14.10.2022
Class	: 70.22	Current expiry date	: 13.10.2025
Process(es) not applicable	: 8.3	1st Surveillance due	: 13.10.2023
Certificate number	: IND/QMS/NAB-C3313/3200	2nd Surveillance due	: 13.10.2024
Attachment(s)	: None		



H.L. Narasimhaiah
 Director

Certificate of compliance has an expiry period of 3 years from the current certification cycle start date but shall be considered as expired if the surveillance audit programme indicated in this certificate of compliance is not implemented to maintain confidence that the certified management system continues to fulfil requirements unless otherwise supported by a letter of continued compliance issued by the registered office of Integrated Quality Certification Pvt. Ltd. Certificate of compliance shall be updated in website/registry as suspended and/or withdrawn if the surveillance programme prior to the due date indicated above is not coordinated and implemented. Written information on any significant organizational changes with impact on the certificate of compliance shall be communicated to Integrated Quality Certification Pvt. Ltd prior to the planned audit schedule.

Corporate Office : Platinum City, G/13/03, Site # 02, Next to CMII, HMI Road, Yeshwanthpur Post, Bangalore - 560 022, India.
 Tel : +91(80) 41172752, 41277353, 41280347, Email : iqccorporate@iqcglobal.com Website : www.iqcglobal.com.
 CIN : U74140KA2003PTC031851.
 Please visit www.iqcglobal.com to verify the authenticity and validity of this certificate of compliance
 QF-12A Rev 00 date 04.12.2019

THE END